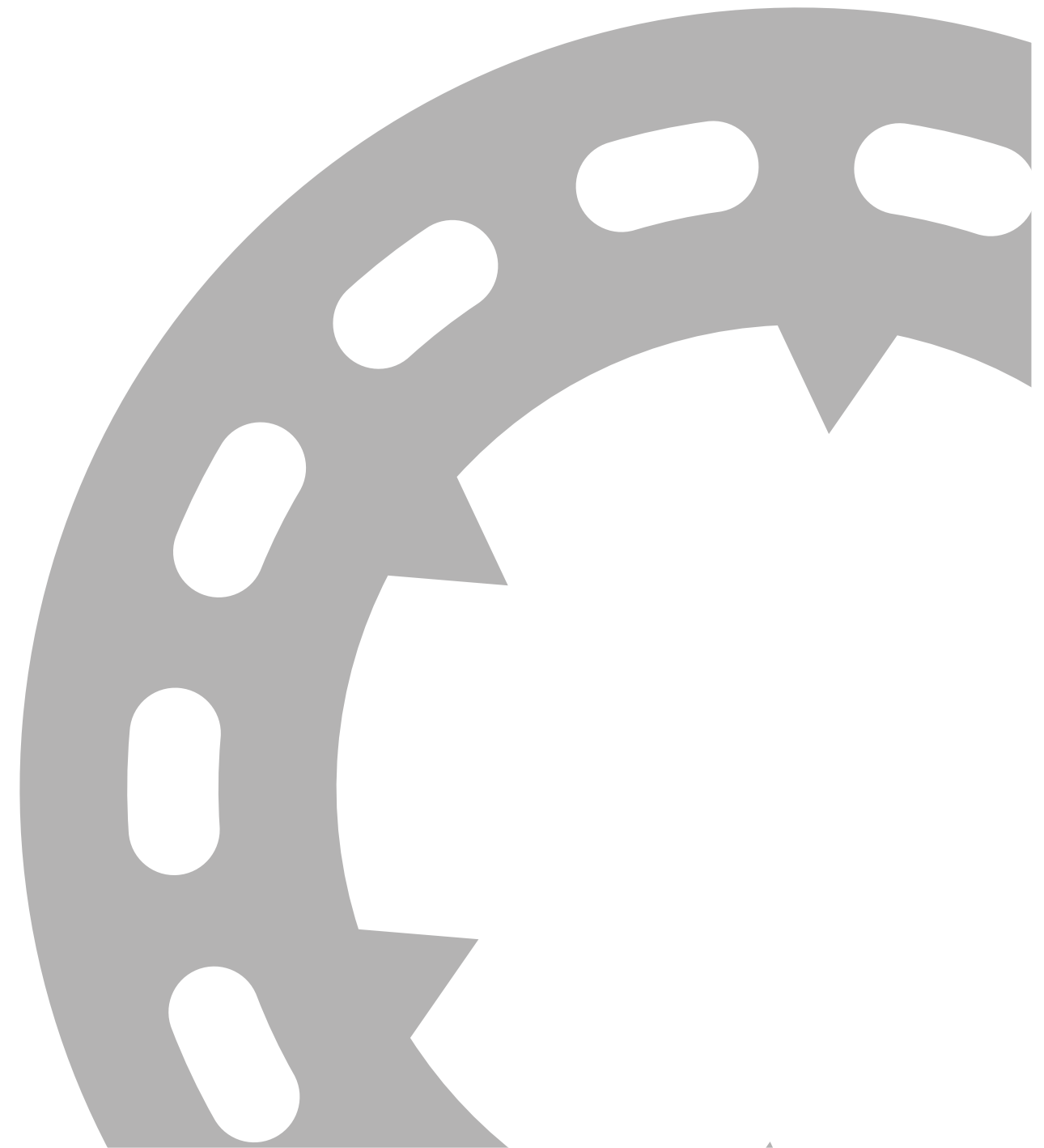


**RIIFO PVC PLUMBING
AND DRAINAGE SYSTEM**



Revised on May 05, 2023

CATALOGUE INDEX

03 ABOUT RIIFO

05 INNOVATION

03 SCALE
05 Facility
05 Capacity

06 RIIFO APPROVALS
06 Group Honor
06 Certificates

07 PROJECT
REFERENCE

12 RIIFO PVC PLUMBING
AND DRAINAGE SYSTEM
12 Advantages

13 STANDARD

13 TECHNICAL DATA

15 SPECIFICATIONS

31 INSTALLATION



ABOUT RIIFO

RIIFO is a leading multinational corporation, providing onestop piping solutions applied in residential, commercial, agricultural, industrial, and infrastructural sectors. Persistently reinventing since 1996, with over 8,000 employees, 70 branches & subsidiaries, and 300,000 distributors, we have served customers in more than 100 countries and regions.

With an integrated value chain, from R&D to manufacturing and retail distribution, we strive to fulfill our mission of offering ideal piping products and services for all environments.

8,000

Employees

300,000

Distributors worldwide

100+

Serving over 100 countries & regions

70

Branches & Subsidiaries



INNOVATION

Believing that innovation is the key to go beyond the ordinary, RIIFO has founded one world-class labs recognized and certified by CNAS. Over 600 innovation talents have spared no effort to challenge industrial boundaries, achieving 923 patents and 20 technology AWards.

And this innovative passion has perfectly presented on high quality products and outstanding services, we strive to offer ideal piping solutions to everyone.



SCALE

We adopt highly automated production lines with the most rigorous and comprehensive production control, and management system to handle such a powerful production.

Facility

9

Global production bases

5,200+

Production staffs

200

Hectares area totally

4,000+

Automated production lines

Capacity

Production Capacity

- Pipe: **3.2 billion** m/yr
- Fitting: **1.3 billion** pcs/yr

Storage Capacity

- **1,735,000 m³** ≈ 61,950 TEU (20 GP Containers)

RIIFO APPROVALS

RIIFO adhere to the concept of quality priority,all RIIFO products are produced under rigorous quality control with excelsior manufacturing. Until now,RIIFO has gained over 50 certificates, such as NSF, DVGW, AENOR, WRAS Watermark, etc. These certificates worldwide underline our technical and quality know-how, and we can provide you with 25 years system warranty backed up by an international insurance company.

Group Honor



Certificates



USA



GERMANY



FRANCE



FRANCE



SPAIN



UK



NETHERLAND



FINLAND



EU



AUSTRALIA



AUSTRALIA



AUSTRALIA



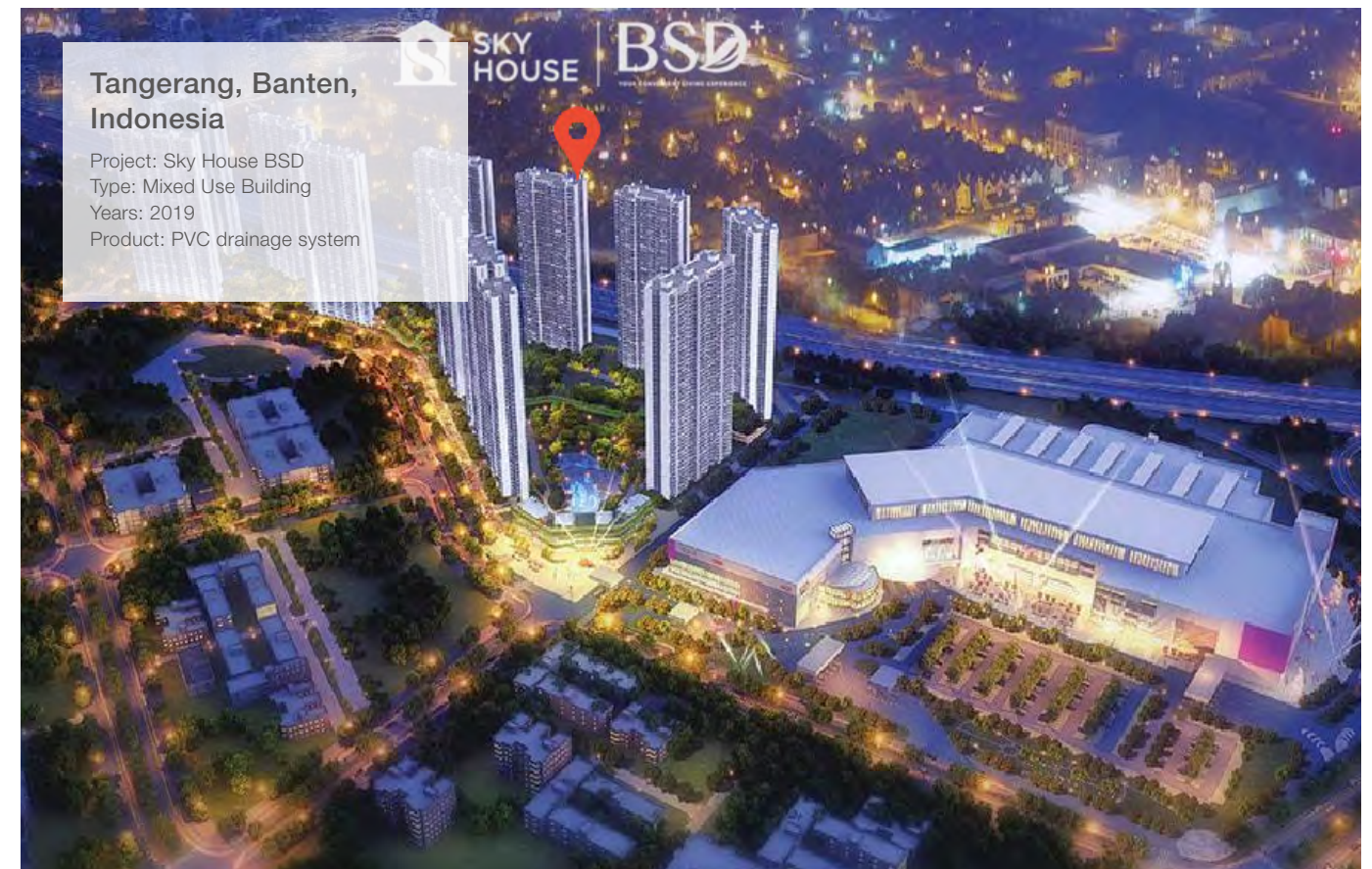
PROJECT REFERENCE

PROJECT REFERENCE



Timika, Papua, Indonesia

Project: Bandara Mozes Kilangin
Type: Airport
Year: 2019
Product: PVC rigid conduit system



Tangerang, Banten, Indonesia

Project: Sky House BSD
Type: Mixed Use Building
Years: 2019
Product: PVC drainage system

PROJECT REFERENCE

Medan, North Sumatera, Indonesia

Project: Regina Maris Hospital
Type: Hospital
Years: 2021
Product: PP-R Plumbing System,
PVC Conduit Piping System



Banjarmasin, Kalimantan, Indonesia

Project: Tower ATC Airnav
Type: Airport
Years: 2020
Product: PVC rigid conduit system



Tangerang, Banten, Indonesia

Project: Kingland Avenue
Type: Apartment
Years: 2019
Product: PVC rigid conduit system



Jakarta, Indonesia

Project: Perguruan Tinggi Ilmu Kepolisian
Type: Education
Years: 2020
Product: PVC rigid conduit system





RIIFO PVC PLUMBING AND DRAINAGE SYSTEM

RIIFO PVC plumbing and drainage system is made of high-quality polyvinyl chloride resins and imported processing additives. It has an advantage of high impact resistance, strong flame retardancy and smooth inner wall, offering perfect solution for water supply and high-rise building drainage in residential, commercial, and industrial.

RIIFO PVC products comply with ISO and JIS standards, providing ideal water supply and drainage solutions.

Advantages

-  Light weight and convenient to transport.
-  Environmental protection and safety, recognized by EPD.
-  Strong flame retardancy, extinguish after leaving the flame for 30 seconds.
-  No need for special installation tools, ease and security of installation.
-  Low coefficient of roughness and smooth walls for a faster downstream.
-  Outstanding water-tightness performance with high-quality adhesive.
-  Excellent physical and chemical properties ensure better tensile strength and durability.
-  Good flexibility and high impact resistance, flat test can reach more than 40% without cracking.

STANDARD

Pipes: RIIFO Standard (refer to JIS standard)

Fittings: JIS Standard (JIS_K 6739 JIS_K 6743)

TECHNICAL DATA

PVC Properties

Term	Index	Term	Index
Density /(kg/m ³)	1350 ~ 1550	Maximum working temperature /°C	60
Coefficient of linear expansion/(×10 ⁻⁵ m/m.°C)	6 ~ 12	Thermal conductivity /[W/(m.K)]	0.12 ~ 0.20
Tensile strength /MPa	35 ~ 45	Coefficient of friction	0.45
Elongation at break/%	60 ~ 120	Insulation resistance (Ω)	≥ 10 ⁸
Bending strength/MPa	65 ~ 110	Dielectric strength/(kV/mm)	≥ 2.0
Compressive strength/MPa	50 ~ 80	Oxygen Index/%	≥ 32
Shore hardness D	70 ~ 90	Self-extinguishing time from fire/sec	≤ 30

PVC Drainage Pipe

Term	Technical Parameters
Density /(kg/m ³)	1350 ~ 1550
Vicat softening temperature/°C	≥ 79
Longitudinal retraction rate/%	≤ 5
Tensile yield stress/MPa	≥ 40
Elongation at break/%	≥ 80
Drop hammer impact test TIR/%	≤ 10
Flat test	No broken

PVC Plumbing Pipe

Term	Technical Parameters
Density /(kg/m ³)	1350 ~ 1460
Vicat softening temperature/°C	≥ 80
Oven test	≤ 5
Drop test	≤ 5
Hydraulic test	No broken, no leakage





SPECIFICATIONS

PVC Pipes AW



Diameter		Wall Thickness (mm)	Length (meter)
inch	mm		
	22	1.50	4
3/4"	26	1.80	4
1"	32	2.00	4
1-1/4"	42	2.30	4
1-1/2"	48	2.30	4
2"	60	2.30	4
2-1/2"	76	2.60	4
3"	89	3.10	4
4"	114	4.10	4

PVC Pipes D



Diameter		Wall Thickness (mm)	Length (meter)
inch	mm		
1-1/4"	42	1.30	4
1-1/2"	48	1.30	4
2"	60	1.30	4
2-1/2"	76	1.40	4
3"	89	1.60	4
4"	114	2.00	4

Socket (AW)



Size (Inch)	Pcs/Ctn
1/2"	300
3/4"	200
1"	100
1-1/4"	64
1-1/2"	40
2"	252
2-1/2"	40
3"	32
4"	12
6"	4
8"	4
10"	2

Valve Socket (AW)



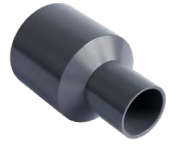
Size (Inch)	Pcs/Ctn
1/2"	450
3/4"	320
1"	175
1-1/4"	100
1-1/2"	60
2"	40
2-1/2"	54
3"	48
4"	18
R1/2"x3/4"	250
R3/4"x1/2"	285
R1"x1/2"	200
R1"x3/4"	175

Double Nipple (AW)



Size (Inch)	Pcs/Ctn
1/2"	560
3/4"	335
1"	220

Reducing Socket (AW)



Size (Inch)	Pcs/Ctn
3/4"x1/2"	225
1x1/2"	215
1x3/4"	150
1-1/4"x1"	110
1-1/4"x1/2"	110
1-1/4"x3/4"	110
1-1/2"x1/2"	72
1-1/2"x3/4"	65
1-1/2"x1"	65
1-1/2"x1-1/4"	45
2"x1/2"	45
2"x3/4"	45
2"x1"	40
2"x1-1/4"	45
2"x1-1/2"	40
2-1/2"x1-1/2"	20
2-1/2"x2"	20
3"x3/4"	20
3"x1"	16
3"x1-1/4"	16
3"x1-1/2"	16
3"x2"	16
3"x2-1/2"	12
4X1-1/2"	18
4"x2"	18
4"x2-1/2"	18
4"x3"	18
5"x3"	9
5"x4"	10
6"x3"	5
6"x4"	5
6"x5"	5
8"x4"	4
8"x5"	2
8"x6"	2
10"x8"	2

Faucet Socket (AW)



Size (Inch)	Pcs/Ctn
1/2"	300
3/4"	1180
1"	120
1-1/4"	60
1-1/2"	40
2"	25
2-1/2"	12
3"	8
4"	18
R1/2"x3/4"	200
R1/2"x1"	165
R3/4"x1"	150
R1"x1/2"	140
R1"x3/4"	130

Faucet Socket [Mi] (AW)



Size (Inch)	Pcs/Ctn
1/2"	240(4@60pcs)
3/4"	160(4@40pcs)
3/4"xRC1/2"	205

Union (AW)



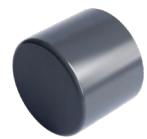
Size (Inch)	Pcs/Ctn
1/2"	110
3/4"	72
1"	54
1-1/4"	30
1-1/2"	18

Union - Threaded (AW)



Size (Inch)	Pcs/Ctn
1/2"	110
3/4"	722
1"	54
1-1/4"	30
1-1/2"	18

End Cap (AW)



Size (Inch)	Pcs/Ctn
1/2"	500
3/4"	400
1"	250
1-1/4"	128
1-1/2"	84
2"	54
2-1/2"	20
3"	48
4"	18
6"	8
8"	3

Plug (AW)



Size (Inch)	Pcs/Ctn
1/2"	1200
3/4"	700
1"	575

Elbow (AW)



Size (Inch)	Pcs/Ctn
1/2"	225
3/4"	145
1"	80
1-1/4"	40
1-1/2"	25
2"	18
2-1/2"	28
3"	16
4"	9
5"	5
6"	5
8"	2
10"	1
12"	1

45° Elbow (AW)



Size (Inch)	Pcs/Ctn
1/2"	
3/4"	
1"	90
1-1/4"	48
1-1/2"	27
2"	44
2-1/2"	24
3"	18
4"	18
5"	4
6"	4
8"	2
10"	1
12"	1

Faucet Elbow (AW)



Size (Inch)	Pcs/Ctn
1/2"	200
3/4"	130
1"	85

Reducing Faucet Elbow (AW)



Size (Inch)	Pcs/Ctn
1/2"x3/4"	175
1" x 1/2"	

Faucet Elbow [Mi] (AW)



Size (Inch)	Pcs/Ctn
1/2"	200(4@50pcs)
3/4"	120(4@30pcs)
1"	
3/4"xRC1/2"	180

Tee (AW)



Size (Inch)	Pcs/Ctn
1/2"	150
3/4"	100
1"	60
1-1/4"	30
1-1/2"	20
2"	30
2-1/2"	16
3"	12
4"	5
5"	5
6"	3
8"	2

Reducer Tee (AW)



Size (Inch)	Pcs/Ctn
3/4"x1/2"	100
1x1/2"	65
1x3/4"	65
1-1/4"x1/2"	45
1-1/4"x3/4"	45
1-1/4"x1"	35
1-1/2"x1/2"	25
1-1/2"x3/4"	24
1-1/2"x1"	24
1-1/2"x1-1/4"	20
2"x1-1/2"	12
2"x1/2"	17
2"x3/4"	15
2"x1"	15
2"x1-1/4"	40
2-1/2"x1-1/2"	6
2-1/2"x2"	17
3"x3/4"	20
3"x1"	18
3"x1-1/4"	18
3"x1-1/2"	16
3"x2"	20
3"x2-1/2"	10
4x1-1/2"	8
4"x2"	6
4"x2-1/2"	7
4"x3"	6
5"x3"	4
5"x4"	6
6"x2"	3
6"x3"	2
6"x4"	2
6"x5"	4

Large Radius Tee (AW)



Size (Inch)	Pcs/Ctn
2"x1-1/2"	8
2"	6
2.1/2" x 1.1/2"	6
2.1/2" x 2"	15
3"x2"	14
3"	8
4"x1-1/2"	7
4"x2"	15
4"x2-1/2"	6
4"x3"	4
4"	7
5"x3"	4
5"x4"	6
5"	2
6" x 3"	5
6" x 4"	5
6"	3
8"x4"	2
8"x6"	2
8"	2

Y-Branch (AW)



Size (Inch)	Pcs/Ctn
2"	20
2.1/2" x 2"	17
2-1/2"	10
3"x2"	11
3"	10
4"x2"	7
4"x3"	6
4"	4
6" x 3"	2
6" x 4"	4
8"x4"	3
8"	2

Faucet Tee (AW)



Size (Inch)	Pcs/Ctn
1/2"	140
3/4"	85
1"	
1xRC3/4"	
3/4"x1/2"	100
1-1/2"	

Faucet Tee [Mi] (AW)



Size (Inch)	Pcs/Ctn
1/2"	140
3/4"	85
1"	
RC1/2"x3/4"	110
1"xRC1/2"	
1"xRC3/4"	

Clean Out (AW)



Size (Inch)	Pcs/Ctn
2"	36
3"	16
4"	18
6"	2

Flange Pvc (AW)



Size (Inch)	Pcs/Ctn
2"	31
2-1/2"	15
3"	15
4"	12
6"	8

Socket (D)



Size (Inch)	Pcs/Ctn
1-1/4"	200
1-1/2"	115
2"	72
2-1/2"	100
3"	600
4"	30
5"	30
6"	18
8"	8
10"	8

Increaser (D)



Size (Inch)	Pcs/Ctn
1-1/2"x1-1/4"	90
2"x1-1/4"	90
2"x1-1/2"	75
2-1/2"x1-1/2"	45
2-1/2"x2"	45
3"x1-1/4"	32
3"x1-1/2"	32
3"x2"	32
3"x2-1/2"	28
4"x2"	40
4"x2-1/2"	40
5"x3"	25
5"x4"	20
6"x3"	12
6"x4"	10
6"x5"	10
8"x4"	8
8"x6"	4
4"x3"	35

Elbow (D)



Size (Inch)	Pcs/Ctn
1-1/4"	90
1-1/2"	60
2"	100
2-1/2"	45
3"	30
4"	15
5"	15
6"	10
8"	3
10"	2
12"	1

45° Elbow (D)



Size (Inch)	Pcs/Ctn
1-1/4"	100
1-1/2"	75
2"	100
2-1/2"	60
3"	35
4"	15
5"	15
6"	10
8"	4
10"	2
12"	1

Large Radius Elbow (D)



Size (Inch)	Pcs/Ctn
1-1/4"	60
1-1/2"	40
2"	20
2-1/2"	30
3"	18
4"	8
5"	5
6"	6

Tee (D)



Size (Inch)	Pcs/Ctn
1-1/4"	55
1-1/2"	40
3"x1-1/2"	36
3"x2"	30
3"x2-1/2"	22
4"x2"	15
4"x3"	12
2"	65
2-1/2"	32
3"	20
4"	8
5"	10
6"	6
8"	2
2-1/2"x1-1/2"	16
2-1/2"x2"	45
4"x1-1/2"	18
5"x3"	8
5"x4"	6
6"x4"	8
8"x4"	4
10"x8"	2

Large Radius Tee (D)



Size (Inch)	Pcs/Ctn
1-1/2"	30
2"	15
2-1/2"	18
3"	15
1-1/2"x1-1/4"	35
2"x1-1/2"	18
2-1/2"x1-1/2"	10
2-1/2"x2"	30
3"x2"	20
3"x2-1/2"	16
4	7
4"x1-1/2"	15
4"x2"	14
4"x3"	8
5"x4"	4
6"x3"	5
6"x4"	5
8"x4"	3
8"x6"	2
6"	

Y Branch (D)



Size (Inch)	Pcs/Ctn
1-1/2"	30
2"	18
2-1/2"	25
3"	15
1-1/2"x1-1/4"	40
2"x1-1/4"	24
2-1/2"x2"	27
3"x2"	20
4"x2"	15
4"x3"	8
4"x4"	6
5"x4"	9
6"x3"	8
6"x4"	5
8"x4"	3
8"x6"	2
6"	6

Large Radius Double Tee (D)



Size (Inch)	Pcs/Ctn
2"	10
3"x2"	15
4"	8

Cleanout With Plug (D)



Size (Inch)	Pcs/Ctn
2"	90
3"	80
4"	36

Cleanout Cap (D)



Size (Inch)	Pcs/Ctn
4"	27

Cap (D)



Size (Inch)	Pcs/Ctn
1-1/4"	144
1-1/2"	84
2"	54
2-1/2"	38
3"	60
4"	30

P-Trap (D)



Size (Inch)	Pcs/Ctn
1-1/2"	18
2"	12
3"	12

PVC adhesive

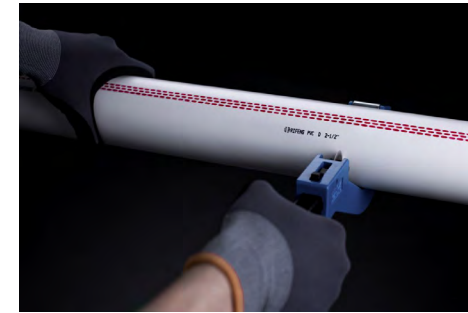


Specif.	pcs/ctn.
PVC adhesive 100ML	24
PVC adhesive 250ML	24
PVC adhesive 500ML	12



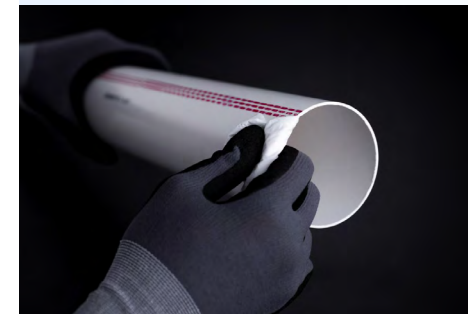


INSTALLATION



Pipe Cutting

Cut the pipe vertically and precisely with RIIFO pipe cutter. Make sure to cut it quickly and precisely.



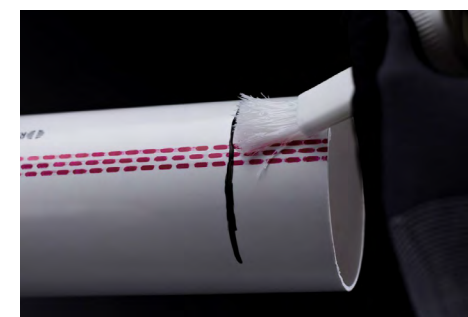
Cleaning

Wipe the surface of pipe and fitting to keep clean, and all the burrs should be removed from the inside and outside edge.



Marking

Mark down the installation depth of pipe and fitting.



Applying PVC Glue

Apply the pipe and fitting evenly with PVC glue.



Connection

After the pipe and fitting are coated with glue, insert them quickly, and rotate them to distribute the glue evenly to ensure a firm connection. After the installation is complete, wipe the overflowing glue.